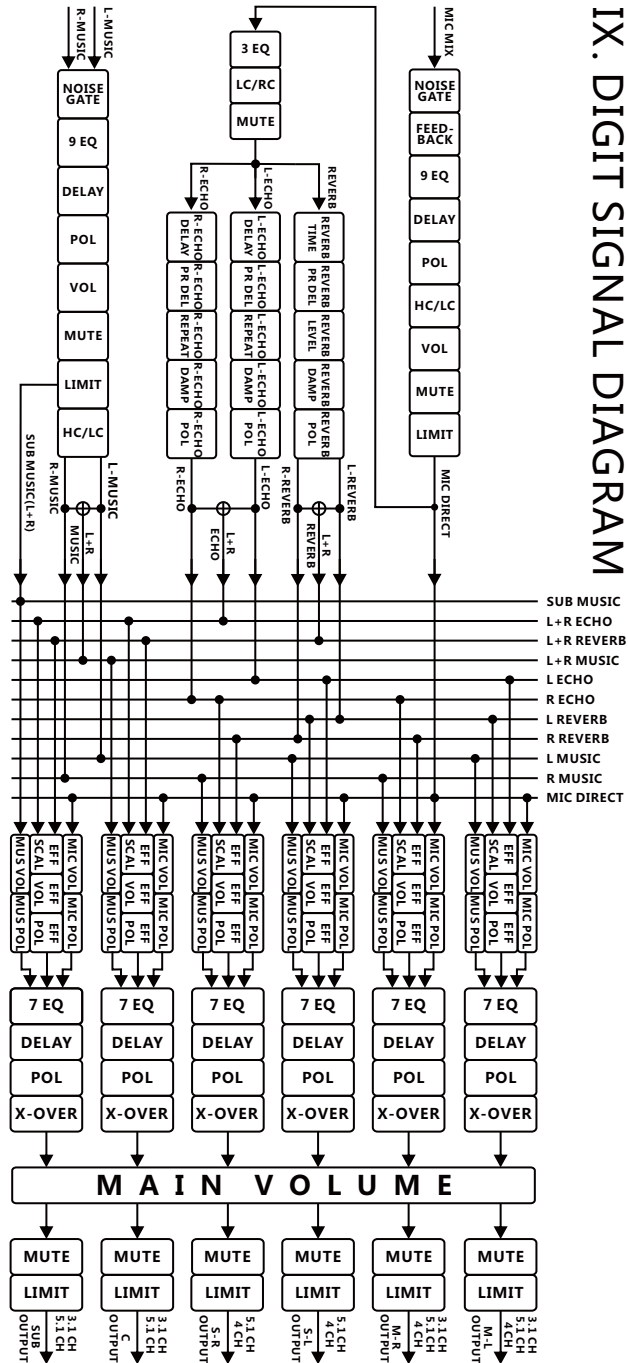




## CATALOG

I. Cautions	02
II. Features	02
III. Specification	03
IV. Front Panel's Functions Introduction	04
V. Rear Panel's Functions Introduction	05
VI. Remote Panel's Functions Introduction	06
VII. Packing accessories	06
VIII. Operation Introduced	07
IX. Digit Signal Diagram	08

## IX. DIGIT SIGNAL DIAGRAM



Thank you to select our Karaoke pre-Amplifier. Your choice of our products, fully show your professional view in these products.

With digital processing, automatic and intelligent, full functions and other features, KP6 is designed for exciting Equipments of projects :VIP luxury karaoke rooms projects,whole sales Kareoke projects, permanent installation and other senior entertainment build up projects.

In order to let you familiar with and use this product well, please read this manual .

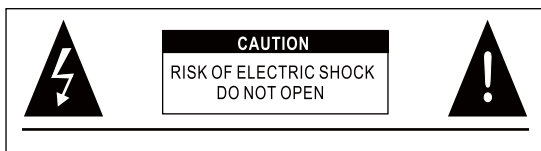
## I 、CAUTIONS

To prevent a short Circuit, keep away from wet or humid areas.

Turn off the device immediately in case of water damage and find an authorized technician for repairs. Do not open the device yourself unless you are an authorized technician.

When appear with an exclamation mark, the device is under operation and repair, and the alert should be on.

When flashes appear with an arrowhead signal, the device had elevated voltage running through it. Please do not touch the device for any reason.



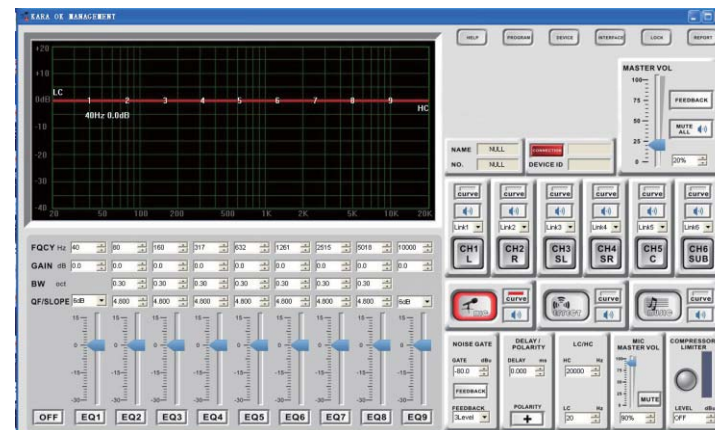
## II 、FEATURES

- 96k Hz Sampling Frequency, 24-bit A/D and D/A converter, 32-bit DSP processor.
- 3RCA Optional /automatic Audio Signal Input, Provide three groups of five Mic Input, 5.1 or 3.1 or 4 channel output.
- Provide USB Cable to connect with PC .Provide Remote Control and Infrared Remote control.
- Directly to use the function keys on front panel or Connecting with PC to operate the device
- 10 kinds of user programs can be stored into the device. 10 kinds of Preset programs are provided before leaving factory.
- The device can be locked through setting password by "System" on the panel , in order to avoid the settetd programs damaged.
- Each Output Channel comes with independent 7-Bands EQ(5PEQ、Lo-Shelf、Hi-Shelf). A high-pass filter and a low-pass filter. 3 kinds of different modes. Gain is adjustable from -30dB to +15dB .
- LCD screen and 7-Bands LED Digital Level Meter showing status of Input ,Output, Mute and Edit.
- Delay ,Phase Control and Mute setting are all available in each Input and Output channel. The output delay is up to 60ms.
- Channel Effect, microphone volume, music volume and effect volume of each Channel can be controlled .
- Micphone comes with 4 levels of feedback functions. Both Microphone and Music Signals come with Noise Gate.
- Effects come with 3-Bands Parametric EQ and a pair of Hi/Lo -cut filter.The ratio between echo & reverb can be adjusted.
- All Channels can be controlled through connecting Central Console and the device by S Terminal.

## VIII. Operation Introduced

Equipment operation using the PC interface of the help menu, simply open the control software.

Before this pre-amp. connected, the software should be installed first. Pls find the file (with .exe Suffix ) in the attachable disk , and run the program. Find"software"to install, and select "Karaoke pre-Amp" and select the "Install processors applications", the install is complete when show below interface :

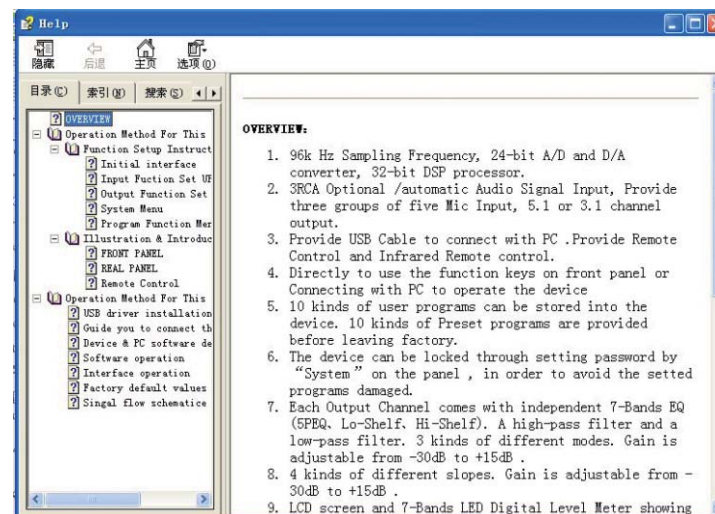


Noted : before linkage operation, need install USB Driver in attachable disk, detail pls refer the software help menu

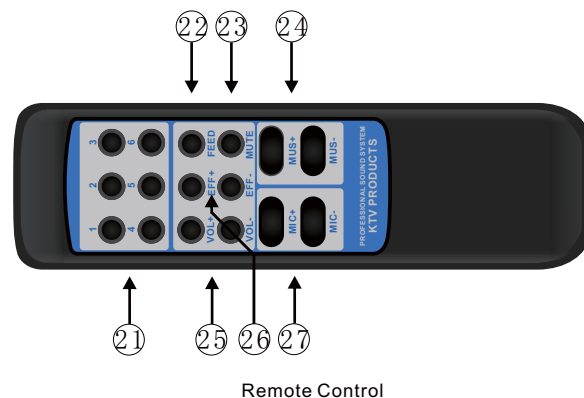
Recall program, view parameters, help, boot set up option, etc.



Click on the menu in the help, pop up the following file, find the parts which you need ,and reading



## VI、Remote Control Introduction



### 21、Fixed effect calls

6 effect fixed modes , marked as 21 (6 keys), Silk screen printing mark 1, 2, 3, 4, 5, 6 respectively user data 1, user data 2, user data 3, user data 4, user data 5 and user data 6;

### 22、Feedback Switch

Feedback switch can closed or select levels, marked as 22.

### 23、Mute Switch

Mute/Unmute Switch of output Channel. Marked as 23.

### 24、Music volume

Music volume adjusting keys, Marked as 24 (Two keys)

### 25、Master Volume

Master volume control keys , marked as 25(Two keys)

### 26、Effect Volume

Effect Volume control keys, marked as 26(Two keys)

### 27、Microphone Volume

Microphone Volume control keys, marked as 27(Two keys)

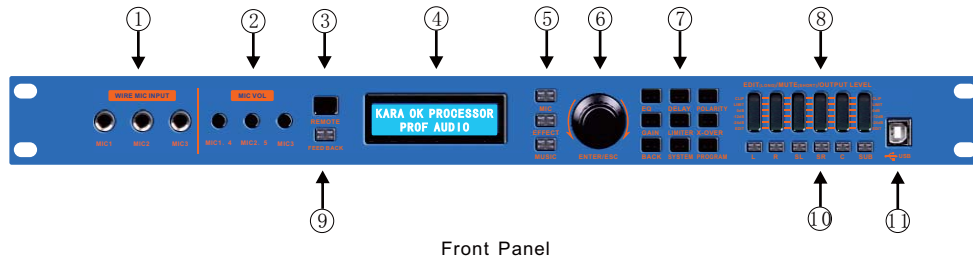
## VII. Packing accessories

- A Book of instructions
- A fuse
- Four protection pads
- A remote
- A pair of batteries
- A USB data line
- A piece of Warranty card
- A power line
- A disc

## III、SPECIFICATION

MODEL			
Name	3.1CH	4CH	5.1CH
Output Channel & Socket	1 pair of Main channels, a Center Channel and a Sub (Male XLR);1 Video Output( RCA )	1 pair of Main channels, 1 pair of surround Channels (Male XLR);1 Video Output( RCA )	1 pair of Main channels,1 pair of surround Channels, a Center Channel and a Sub (Male XLR);1 Video Output( RCA )
Input Channel & Socket	1 against 3 Music Signals, 2 pairs of RCA Input , 1pair of Female XLR, 1 against 3 RCA Video Inputs,3Groups with 5CHs Mic Input		
Input Impedance	Balance: 20KΩ		
Output Impedance	Balance: 100Ω		
PC Com Port	One USB Com Port on front panel		
remote control	One S Terminal on rear panel		
CMRR	>70dB(1KHz)		
Input Range	≤+25dBu		
Frequency Response	20Hz-20KHz(-0.5dB)		
S/N R	>110dB		
THD	<0.01% OUTPUT=0dBu/1KHz		
Crosstalk of Channels	>80dB(1KHz)		
Functions of Input Channels			
Input Mute	Each channel has Independent Mute Control		
Input Delay	Each channel has Independent Delay Control Range:0—30ms.stepover 0.1ms@<10ms; stepover 1ms@>10ms		
Input Polarity	Same Phase + or reversed Phase -		
Input EQ	Music and Mic are set with 9 Bands Parametric EQ. Central Frequency Point:20Hz-20KHz, BandWidth:0.01oct-3oct,stepover is 0.01oct. Default Frequency:EQ1 40Hz,EQ2 80Hz,EQ3 160Hz,EQ4 317Hz,EQ5 632Hz,EQ6 126Hz,EQ7 515Hz,EQ8 5018Hz, EQ9 10KHz. Also, High-cut and Low Cut Filter is added.		
Input Gain	Both Music and Mic have independent Gain Control from 0%to100%		
Limiter	Both Music and Mic have independent Limiter Control, -30dBu -+20dB,stepover 0.1dBu		
Feedback	Mic comes with 4 levels Feedback functions		
Noise Gate	Open range:-10dBu to -119dBu stepover 1dBu		
Functions of Output Channels			
Output Mute	Each channel has Independent Mute Control		
Output Polarity	Same Phase + or reversed Phase -		
Output EQ	Each Output Channel can be set up as 7Bands EQ. Central Frequency Point:20Hz-20KHz, BandWidth:0.01oct-3oct,stepover is 0.01oct. Default Frequency:EQ1 47Hz,EQ2 112Hz,EQ3 266Hz,EQ4 631Hz,EQ5 1495Hz,EQ6 3544Hz,EQ7 8399Hz.		
Output Gain	Each Channel has independent Gain Control. Adjustable Range:0%to100%,stepover 1%		
Output Delay	Each channel has Independent Delay Control Range:0—60ms stepover 0.1ms@<10ms; stepover 1ms@>10ms		
Crossover	Each Channel can be set up LPF and HPF independently.Adjustable Parameters: Filter Types (Linkwitz-Riley/Besse/Butter-worth) Frequency Turning Point:20Hz-20KHz, 239 Frequency Points Decay of Slope:12dB/oct, 18dB/oct, 24dB/oct, 48dB/oct		
Limiter	Each Channel can be set up limiter independently. Adjustable Parameters: Threshold Value:-20dBu-+20dBu Stepover:0.5dBu@starting time:0.3ms-100ms Stepover<1ms @0.1ms, Stepover>1ms@1ms		
Effector	1M of Memory ,3-Bands Parametric EQ guarantees Real Effect Processor		
Processor	96KHz Sampling frequency, 32-bit Floating-Point DSP		
Display	With 144*32 LCD, 8-LED input/output level. Mute and Editing mode can be displayed.		
Power	≤25W		
Power Supply	AC110V/220V 50/60Hz		
Product Dimension (W×D×H)	482X190X44mm		
Net Weight	3.8kg		
Shipping Dimension (W×D×H)	1PC: 562X362X98mm/0.0199m³ 6PCS: 575X375X608mm/0.1311m³		
Gross Weight	1PC: 4.8 (kg) 6PCS: 30 (kg)		

## IV. Front Panel's Functions Introduction



Front Panel

### 1. Wired microphone socket

Have three groups microphone socket with switch on the front panel, the priority and gain is higher than Rear Panel's.

### 2. Microphone volume knob

There are 3 groups to Control each microphone volume: Mic1 and Mic4 for a group, Mic2 and Mic5 for a group, and Mic3 is a single group.

### 3. Infrared receiving window

Equiped with remote control operation throuth remote controller, the detail please refer the part of "Remote control Function introduction".

### 4. LCD display

144\*32 LCD Screen, display operation interface and information of each menu.

### 5. Input function editing keys

(1) MIC; (2) EFFECT; (3) MUSIC;  
Short-touch press: Mute/Unmute Switch, when in Mute, the key's light is in red.  
Long-touch press: access Input editing function interface, detail please refer the part of "Input Controlling function Setup".

### 6. Encoder

(1) Clockwise: Parameters increase, and moves right or move down the menu  
(2) Counter-clockwise: Parameters decrease, and moves left or move up menu  
(3) One-touch press: "Enter" key is for access or confirmation.  
(4) Continuous press: Special confirmation.

### 7. Function selection / Auxiliary editing keys

(1) EQ; (2) DELAY; (3) POLARITY;  
(4) GAIN; (5) LIMITER; (6) X-OVER;  
(7) ESC; (8) SYSTEM; (9) PROGRAM

And (1)、(2)、(3)、(4)、(5)、(6) are input、output Function select keys;  
(8)、(9) are system Function select keys.  
(7) is globalfunction key.

### 8. LED Indicator

6 Bands LED Digital Level Meter showing status of input, output and Editing(5.1CHs 6 group, 3.1CHs 4 group)

(1) CLIP display, when signal is in THD, the light is in red  
(2) Limit display, when signal over the value you set up, the light is in yellow.  
(3) 3 Bands LED Level display the range from -24dB to 0dB, the light is in Green .  
(4) EDIT : When the light is in yellow, showing which Channel are being edit.

### 9. Feedback control key

This key have 5 states, when closed, the light is turn off, when from level 1 to 4, the light is in yellow.

To switch the states , just press the key.

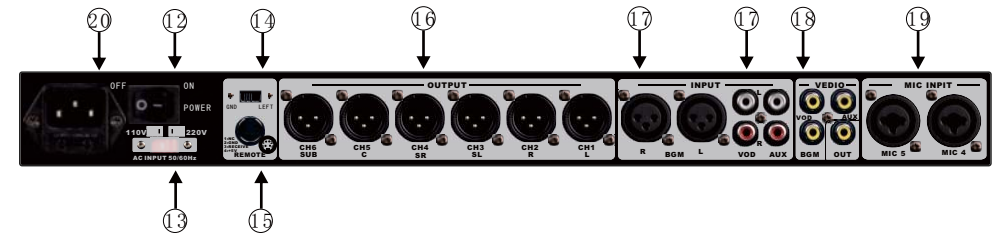
### 10. Output mute, Edit keys

(1) Short - touch press: when in Mute/No mute Switch, the key's light is in red.  
(2) Long - touch press: when access Output editing function interface, the EDIT indicator light is turn on, detail please refer the part of "Output Controlling function Setup".

### 11. USB COM Port

Communicates with PC. Through PC interface software, the related Parameters can be adjusted.

## V. Rear Panel's Functions Introduction



Rear Panel

### 12. Power Switch

Access input Voltage (which marked on the power converter Switch), press the Switch, and it will work normally.

### 13. Power Select Switch

Grid voltage Corresponding Switch.

### 14. Ground Strobe gating

Control the Turn on /Turn off communication between Chassis and Signal ground.

### 15. Remote control

Can instead of remote control to realize the remote control functions, also can realize the unified system control through conneting Central console.

### 16. Audio Output

a. 6 channels output, Marked as L (left Main), R (Right Main), SL (Left Surround), SR (right Surround), C (central), SUB (Subwoofer), Standard 5.1 Channel output.

b. 4 channels output, Marked as L (left Main), R (Right Main), C (central), SUB (Subwoofer), Standard 3.1 Channel output.

### 17. Audio Input

3 Optional/Automatic Groups mic Audio Inputs, Marked as BGM, VOD, AUX, have association with Music input, VOD gain is 6dB higher than BGM, And 3dB higher than AUX.

### 18. Video Input

3 Video Inputs and 1 Output. And for 3 Optional/Automatic Video Inputs, Marked as BGM, VOD, AUX, have association with Music input.

### 19. Wireless microphone Input

Rear have two microphone sockets, marked as MIC4, MIC5, the priority and gain is lower than Front Panel's.

### 20. AC Power Input Socket

Access corresponding AC input voltage according to the Power Select Switch gear instruction.