

TXQ series

4 Channels Class D Power Amplifier

SAE

www.saeaudio.com
Download and share.



The new TXQ is the best solution for those sound reinforcement applications requiring a multichannel amplifier with a solid and good sounding characteristic but on an affordable budget. Implementing Power Factor Correction (PFC) technology along with Universal Mains Regulated SMPS power supply and Class D power modules, the TXQ series combines in the same amplifier all the functional requirements for most sound reinforcement applications.

Technology

Class D

SAE Audio Class D technology implements the most advanced electronics within the smallest form-factor amplifier modules. The Class D amplifiers by SAE Audio implement the most efficient sound amplification technology available today, providing an unmatched system portability and affordability with the best sonic performance.

Power Factor Correction

SAE Audio innovative Power Factor Correction (PFC) technology along with its renowned R-SMPS power supply allows to draw current from the mains in a more efficient way translating to a higher output power with a lower power consumption. Additionally PFC improves audio quality; it generates lower harmonics of the mains frequency thus reducing the hum and induced distortion because of perturbed mains.

Universal Mains R-SMPS

SAE Audio renowned Regulated SMPS power supply has been further improved with universal mains operation on all the range from 90V to 260V, eliminating the need for market specific power supplies and related reliability issues. The Universal Mains Regulated SMPS power supply delivers consistent power world- wide.



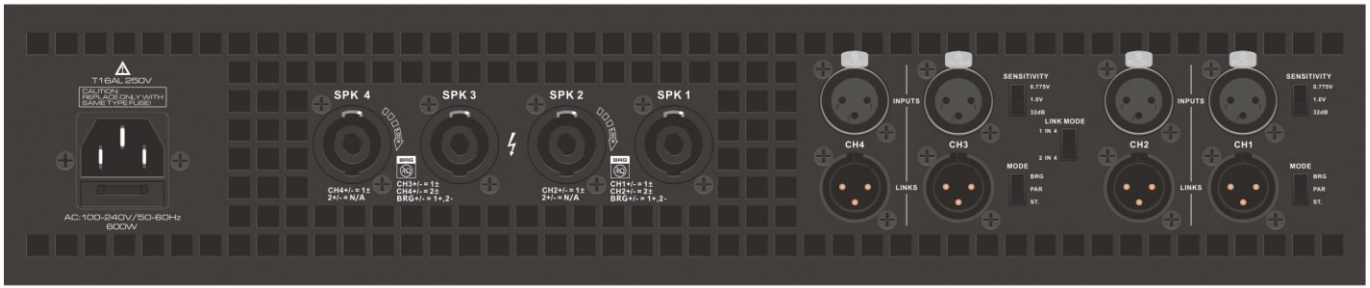
Features

- Class D power modules.
- Universal mains Regulated SMPS.
- XLR signal input and link connectors.
- SpeakON NL4 and binding-post output connectors.
- Input sensitivity selector on the back panel (0.775V / 1V / 32dB).
- Routing mode selector on the back panel (stereo / bridge-parallel).
- Link mode selector (1-in 4-out / 2-in 4-out).
- Channel independent protection and clip warning indicators on the front panel.

- Channel independent power and -5dB/-10dB/-20dB/signal presence indicators on the front panel.
- Low unit weight.

Applications

- Sound reinforcement applications with mid power density and good sounding requirements.
- Small to mid sized bar/café/lounge installation.
- Portable or rental industry PA system.

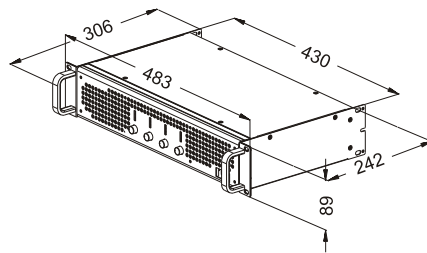


TX1000Q rear panel

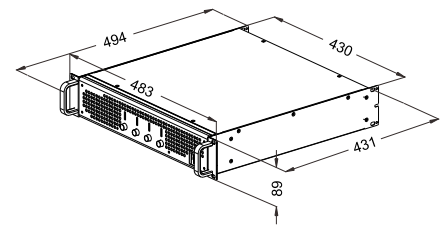
Specifications

Model	TX500Q	TX650Q	TX800Q	TX1000Q	TX3500Q
Output power (AC 220V / 50Hz. ±10%, All channels driven output power, THD=1%)					
8Ω stereo	500W x4*	650W x4*	800W x4	1000W x4	3500W x4*
4Ω stereo	850W x4**	1100W x4**	1300W x4**	1700W x4**	3500W x4*
8Ω bridge	1700W x2**	2200W x2**	2500W x2**	3500W x2**	N/A
Other specification					
Frequency response	20Hz-20kHz (+0/-1dB)				20Hz-20kHz (+0/-2.5dB)
S/N rate	≥ 98dB	≥ 98dB	≥ 98dB	≥ 98dB	≥ 98dB
Input sensitivity	0.775V / 1.0V / 32dB				
Input impedance(bal/unbal)	20kΩ / 10kΩ				
Voltage gain (8 ohm)	38.2dB	39.3dB	40.3dB	41.2dB	47dB
Output circuitry	Class D				
Cooling	Air flow from front to rear				
Dimension / Weight					
Product Dimension(mm)	483 x 306 x 89	483 x 306 x 89	483 x 306 x 89	483 x 306 x 89	483 x 494 x 89
Packaging Dimension(mm)	560 x 420 x 170	560 x 420 x 170	560 x 420 x 170	560 x 420 x 170	620 x 585 x 170
G.W.	9kg	9.2kg	9.5kg	9.7kg	15kg

Dimension(mm)



TX500Q / TX650Q / TX800Q / TX1000Q



TX3500Q

- Remark : 1. *,The power is tested under the condition of 40ms burst,1kHz sine wave and 1% THD.
 2. **, The other power is tested under the condition of 20ms burst,1kHz sine wave and 1% THD.
 3. Other power is tested under Q/SAE 2-2006 standard.
 4. SAE reserves the right to make any changes to the product specifications without prior notice. Final specifications to be found in the user manual.